



YOSHIMURA

RESEARCH&DEVELOPMENT OF AMERICA, INC.

5420 DANIELS STREET STE A, CHINO CA. 91710 · (800)634-9166 · (909)628-4722 · FACSIMILE (909)591-2198

www.yoshimura-rd.com

TRC PERFORMANCE EXHAUST SYSTEM

YAMAHA
2009-2013
ZUMA 125

| | |
|----------------|---|
| 1395072 | STAINLESS STEEL FULL SYSTEM WITH CARBON FIBER SLEEVE AND ENDCAP |
| 1395075 | STAINLESS STEEL FULL SYSTEM WITH STAINLESS STEEL SLEEVE AND ENDCAP |
| 1395076 | STAINLESS STEEL FULL SYSTEM WITH STAINLESS STEEL SLEEVE AND CF ENDCAP |

NOTE: THIS SYSTEM IS DESIGNED FOR USE IN CLOSED COURSE COMPETITION AND IS NOT INTENDED FOR ANY OTHER USE.



THIS PRODUCT IS DESIGNED FOR USE IN CLOSED COURSE RACING AND IS NOT INTENDED FOR ANY OTHER USE.



CAUTION: The muffler packing on this system **MUST** be replaced every 6-8 hours of use, or after each moto. Failure to follow recommended muffler re-packing interval can cause muffler damage and may void the warranty.



NOTE: IN THE STATE OF CALIFORNIA, IT IS ILLEGAL TO MODIFY THE EMISSION CONTROL SYSTEM. WHICH INCLUDES THE CARBURETORS OF ANY VEHICLE.

Caution: Exhaust system can be extremely hot. Let motorcycle cool down before beginning installation. Always wear hand and eye protection and take precautionary measures to avoid injury.

Note: Read through all instructions before beginning installation.

Tools Needed:

Metric Socket Set, Ratchet, and Extension
Metric Open End Wrenches
Torque Wrench

Installation Steps:

1 Stock Muffler Removal Instructions.

- Remove O2 sensor from stock header.
- Remove header nuts.
- Remove muffler bolts .
- Unhook fender from muffler and remove muffler.



Fig. 1

2. Install Yoshimura System

-Insert supplied rubber grommet into the rear mounting hole on the muffler mounting bracket. (See Fig 3 and Parts Diagram)

-Insert aluminum spacer into rubber grommet as shown in Fig. 3 and Fig. 4.

-Install Yoshimura muffler bracket using supplied hardware. (See Fig. 4 and Parts Diagram for Orientation)

-Torque mounting bolts to 16.5 lb-ft (23 Nm).

-Install new exhaust gasket (Not supplied) and install Yoshimura header using stock header nuts. (See Fig. 8) Tighten but do not torque at this time.

-Install Yoshimura heatshield into the muffler clamp.

-Slide muffler clamp onto Yoshimura muffler.

-Install Yoshimura fender bracket onto muffler using supplied bolts. (See Fig. 7)

-Bolt muffler clamp to Yoshimura muffler bracket using supplied hardware. Orientation is as follows: Supplied bolt, muffler clamp, spacer, rubber grommet (Installed in muffler bracket), supplied washer, supplied nut. (See parts diagram for orientation). Do not torque at this time.

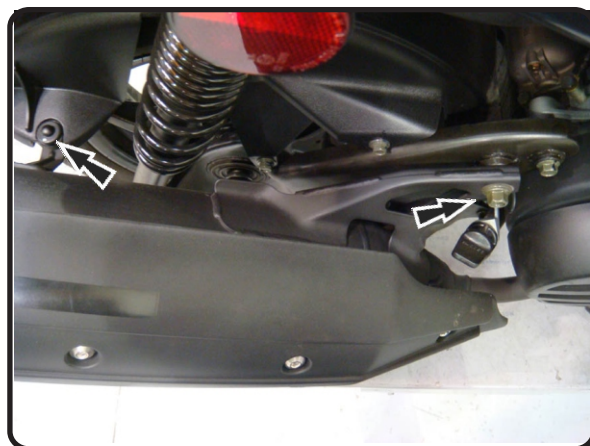


Fig. 2

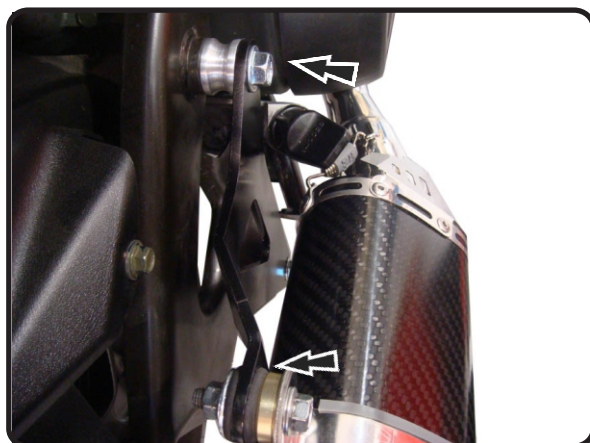


Fig. 3

Installation Steps:

- Torque header nuts to 12 lb-ft (16.2 Nm). (See Fig. 8)
 - Torque muffler mounting bolt to 14 lb-ft (19 Nm).
 - Bolt fender to Yoshimura muffler bracket using supplied bolt, washer and nut. (See Fig. 7)
- 3 It is recommended that the muffler and tailpipe be wiped down with rubbing alcohol to remove oil and fingerprints. This will help prevent tarnishing of the finish after the exhaust is heated up.
 - 4 Check for proper clearance between new exhaust system and swing arm. If any problem is found, please carefully follow through the installation steps again. If problem still persists, please call Yoshimura tech. Dept. at (800)634-9166 / in CA (909) 628-4722



Fig. 6

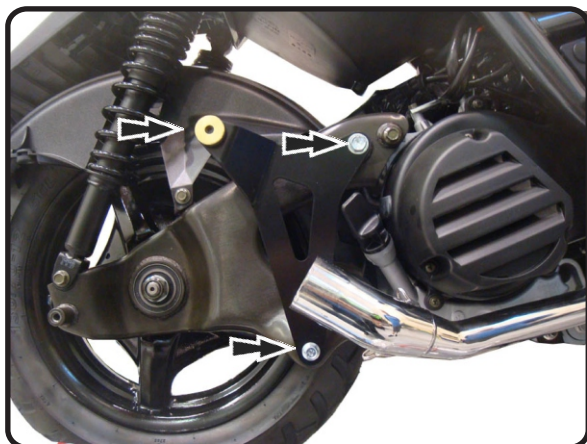


Fig. 4

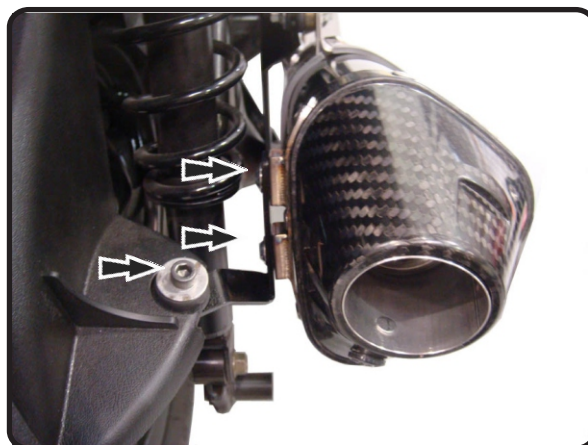


Fig. 7



Fig. 5

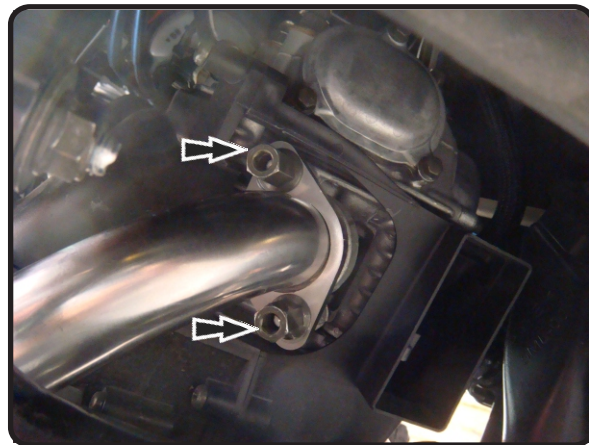
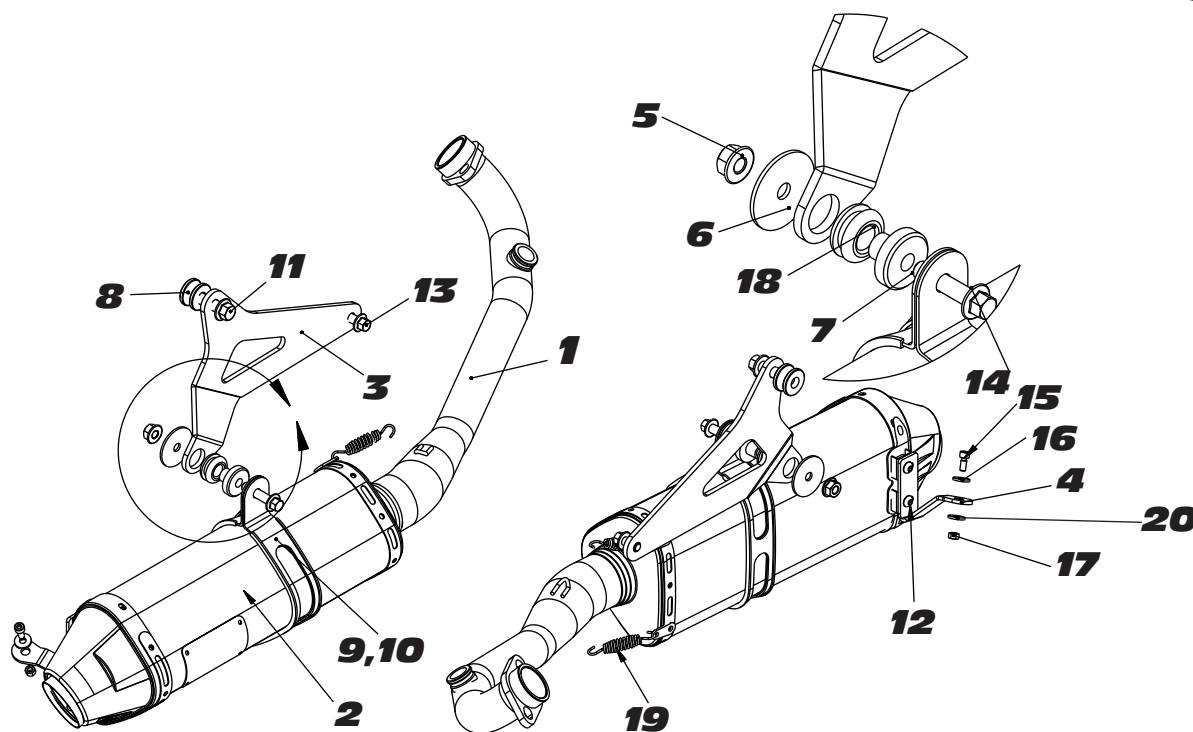


Fig. 8

#139507(2,5,6)



Parts Diagram

| NO. | DESCRIPTION | QTY | PART # |
|-----|--|-----|---|
| 1 | Yoshimura Header | 1 | 1395-101 |
| 2 | Yoshimura Muffler with Carbon Fiber Sleeve; CF Endcap with Stainless Steel Sleeve; SS Endcap with Stainless Steel Sleeve; CF Endcap | 1 | 1395072-RMA 1395075-RMA 1395076-RMA |
| 3 | 1395 Muffler Bracket | 1 | 1395-BKT-00 |
| 4 | 1395 Fender Muffler Bracket | 1 | 1395-BKT-01 |
| 5 | 8mm Flanged Nut | 1 | 8MMNUT |
| 6 | 8mm Flat Washer | 1 | 8MMWASHERL |
| 7 | Aluminum Spacer | 1 | ALS-002 |
| 8 | 15mm X 10mm ID Spacer | 1 | 10X15SPCK |
| 9 | TRC Muffler Clamp for Carbon Fiber for Stainless Steel | 1 | CTS082 CTS082X |
| 10 | Slotted Heatshield for Muffler Clamp | 1 | HT SHLDTRS |
| 11 | 10mm X 35mm Flanged Hex Head Bolt | 1 | M10X35H |
| 12 | 6mm X 10mm Button Head Screw | 2 | M6X10BHS |
| 13 | 8mm X 16mm Flanged Hex Head Bolt | 1 | M8X16H |
| 14 | 8mm X 35mm Hex Head Bolt | 1 | M8X35H |
| 15 | 5mm Socket Shoulder Bolt | 1 | M5X12SB |
| 16 | 6mm Flat Washer | 1 | 6MMWASHER |
| 17 | M5 x 0.8 Nylon Lock Nut | 1 | 5MMLN-U |
| 18 | Aluminum Bracket Rubber Grommet | 1 | Z1022 |
| 19 | Medium Exhaust Spring | 2 | RACE-SPS-1 |
| 20 | 5mm Flat Washer | 1 | 5MMWASHER |
| ** | Low Volume Sound Insert | 1 | 1590-INS-K |
| ** | Spring Puller Tool | 1 | ST-200 |
| ** | Yoshimura Sticker Kit Sheet | 1 | 17029 |

Carburetor Jetting Recommendations:

Main Jet: No Change
Pilot Jet: No Change

Jetting may vary due to many variables that affect air/fuel.

Note: It is illegal to modify the fuel system on any vehicle in the state of California.